



## RotaSec HS90SC

Internal/external full-height security turnstile



**GUNNEBO®**  
*For a safer world*

# Technical Specifications

## Drive

Hand operated. 90° configuration, 4N° rotor elements.

Electro-mechanical head mechanism, comprising:

- Positive action lock which prevents two passages at one time
- Self centering mechanism to ensure complete rotation of the head to the reset position
- Anti backup device preventing reverse rotation once the head has moved 30° from its rest position

## Materials

Turnstile Frame: box and round hollow section with extra infill bars in the side frames fitted to minimise the gaps and slow down the attacker.

Steel galvanized under a final textured polyester powder top coat finished to Gunnebo RAL colour selection: Green - RAL 6005, Black – RAL 9005, White - RAL 9010, Grey - RAL 7004.

Mechanism Cover: Two part, steel made, same above finishing, secured with security fixings.

Rotor Assembly: A mild steel trombone rotor hot zinc sprayed with polyester powder coated finish, filled with a composite material to withstand a prolonged cutting attack. Reinforced trombone arms with steel ribs to stop the arms from being forced in the horizontal and vertical direction.

A bespoke designed bearing ensures the rotor cannot be forced off of the bearing plate.

## Power Failure / Fire Alarm

In the event of an emergency or isolation of power supply, unit may be configured to failsafe (FSO) i.e. rotor freely rotates or fail-lock (FSL) i.e. rotor locks. Either option is available in both or one direction. As standard, units are delivered FSL if not required otherwise.

Fire Alarm: Input facility available for voltage free contact supplied by others to effect fail-safe. Fail state will be the same as power failure choice.

## Additional Interface

Potential free contact provided by either a cardreader or pushbutton input. Cardreader inhibit and reset output signals available as standard. Unit has an adjustable time out facility if required i.e. Go signal will be cancelled if passage through turnstile is not completed within pre-set time.

## Power Supply / Power Rating

115/230 Volts AC 5/60 Hz 100VA (with walkway downlights 140 VA)

Logic Voltage: 24 Volt DC.

## Operating Temperature: -15 to +40°C

## Flow Rates (approximate figures)

- Insertion Type Reader, 12 passage per minute
- Swipe Type Reader, 15 passage per minute
- Proximity Reader “Hands Free”, 17 passage per minute

## Installation Details:

RotaSec models are delivered as a partly assembled kit of parts, which may require lifting gear for off loading. Alternatively fully assembled.

**Servicing:** Via removal of top Mech cover only.

**Weight:** 650kg, Single Unit.

## MODELS OR VERSIONS

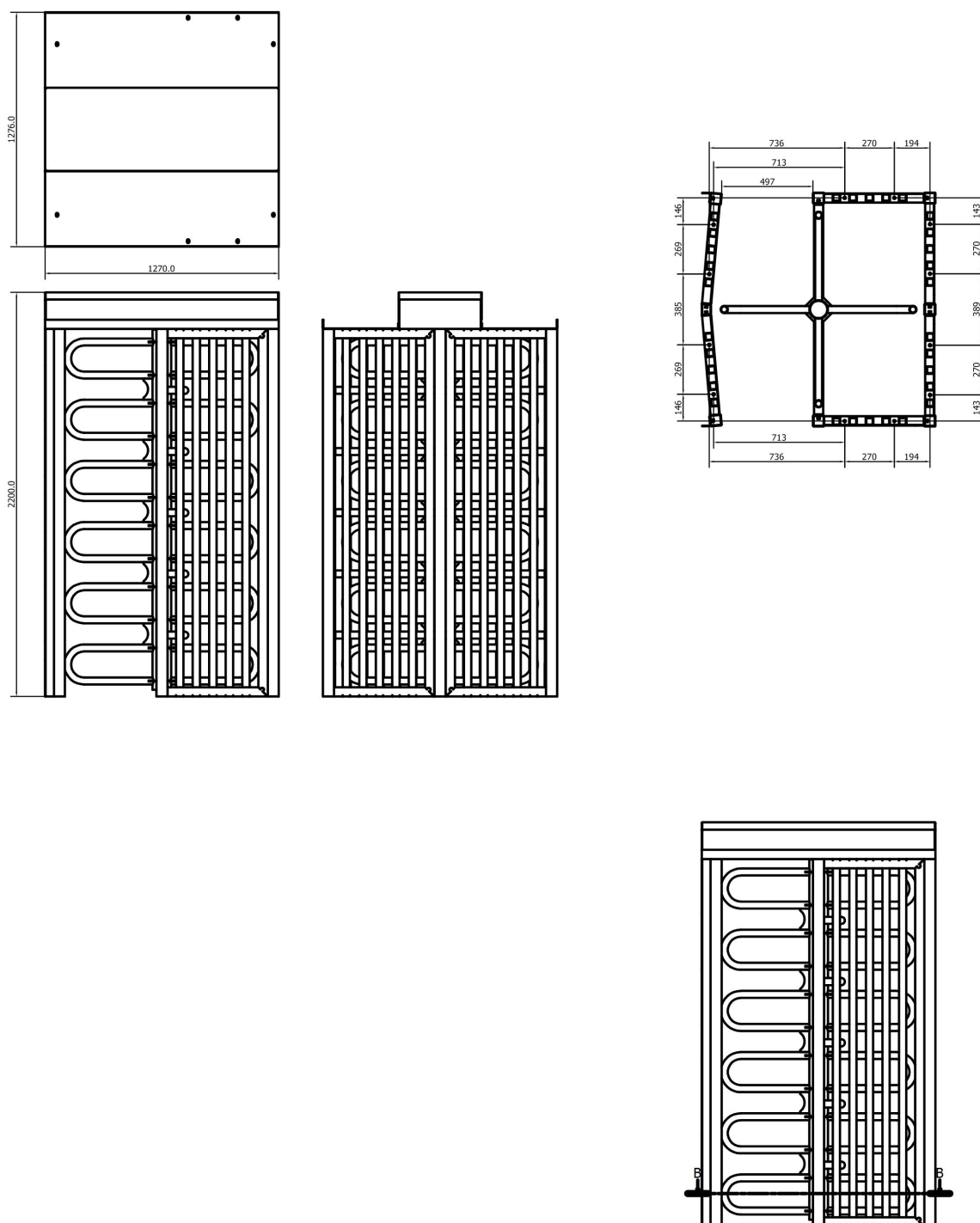
- Single 90°

## OPTIONS & EXTRAS

- RAL colour selection
- Card reader mounted
- Push button control
- Downlights

## APPLICATIONS

- Government
- Retail
- Telecommunications
- Transport
- Petrochemical
- Pharmaceutical
- Financial
- Banking



Concrete Base to BS 5328:1997 specification. Base to be flat and level to +/-5mm over footprint area. Dimensions to be > 1800 x 1800 x 150 dep min.

## IMPORTANT

- Any horizontal pipe or conduit running below the RotaSec must be at least 140mm below FFL
- Metal conduit for cables should be raised at least 50mm from foundation
- It is the customer's responsibility to ensure the structural integrity and strength of the installation location
- Dimensions provided in this Product Data Sheet are for information only. In order to prepare the installation site, please refer to your usual Gunnebo Customer Service contact

The data given in this material may be subject to change without further notice. The Gunnebo logo and "Gunnebo - For a safer world" are registered trademarks of Gunnebo AB. See [www.gunnebo.com](http://www.gunnebo.com) for more information.

Gunnebo UK Ltd	Tel	+44 1902 455 111
Fairfax House	Email	<a href="mailto:enquiries.uk@gunnebo.com">enquiries.uk@gunnebo.com</a>
Pendeford Business Park	Web	<a href="http://www.gunnebo.co.uk">www.gunnebo.co.uk</a>
Wobaston Road		
Wolverhampton		
WV9 5HA		
United Kingdom		

**GUNNEBO®**  
*For a safer world*