

Simplex Tripod Turnstile for internal installation

Technical Specifications

Drive:	Hand operated
Orientation:	Pass Left or Pass Right
Materials:	Casework: 304 Grade Stainless Steel or Painted Steel RAL 7032. Casework Lid: 304 Grade Stainless Steel Tripod Hub:: Aluminium Alloy painted black. Tripod Arms: Stainless Steel tube, polished Dia. 35 mm, walkway 500mm
Function:	Passage in both directions, electronically controllable
Mechanism:	Control of the Tripod operation is achieved by an electro-mechanical head mechanism located within the top section of the turnstile casework. It is silent in rotation and comprises the following standard features: - <ul style="list-style-type: none">• A positive lock action that prevents two passages at one time• A self centering mechanism to ensure complete rotation of the mechanism to the home position• A hydraulic damper to ensure smooth operation and longer mechanism's life• Anti backup device to prevent reverse rotation once the mechanism has moved 60° from home
Operating Modes:	When go signal is given from the access control system or from a push-button, the tripod can be rotated for 120°, allowing the passage of only one person at a time.
Power Failure:	In the event of isolation of the power supply, the tripod can be configured to fail-safe (SMT), i.e. rotates freely, or fail-lock (BMT), i.e. locks in the home position. Either option is available in both or one direction.
Interface:	The HE84/3 control logic has the following standar features: <ul style="list-style-type: none">• One input for opening/locking the mechanism in each direction (voltage free contact required)• Two 0V output relays indicating availability of use in either direction• Two 0V outputs to count passage in either direction . The Unit has an adjustable time out facility if required i.e. Go signal will be cancelled if passage through turnstile is not completed within pre-set time.
Power Supply:	115/230V AC 50/60Hz
Max Power Rating::	50VA
Logic Voltage:	24V dc
Delivery Details:	Simplex is delivered fully assembled and may require lifting gear for off Loading, weight is approx 70 kg.



Product Description

The Simplex has been designed to create a real transit passageway in order to improve the passage control.

The length of the cabinet creates a passageway to discourage any attempt to override the turnstile.

Users include

- Government
- Retail
- Finance
- Telecommunications
- Information Technology
- Banking
- Publishing
- Leisure
- Petrochemical
- Education

Regulate

Accessories

Cardreader Mounting (Please refer to Gunnebo Entrance Control Ltd for feasibility)

- Surface mounting only of customer supplied readers
- Cardreader Pedestals

Traffic-lights

- LED traffic-lights are available to give availability to transit in a specific direction.

Remote Control

- MP2000 Control Module: to set turnstile operation modes (free, locked or controlled by card reader)
- Single entry push-button

Key Selector

- Key installed on Turnstile that allows the selection of the operating modes (free, locked or controlled by card reader)

Counters

- Electromechanical or LCD counters to count people entering or exiting the Turnstile.

Anti-panic Device

- The horizontal tripod arm can be folded in the exit direction when a force is applied. This allows people escape in case of panic.

Mechanical tripod turnstile

- Purely mechanical unit that allows the transit in one direction only. The rotation in the opposite direction is locked.

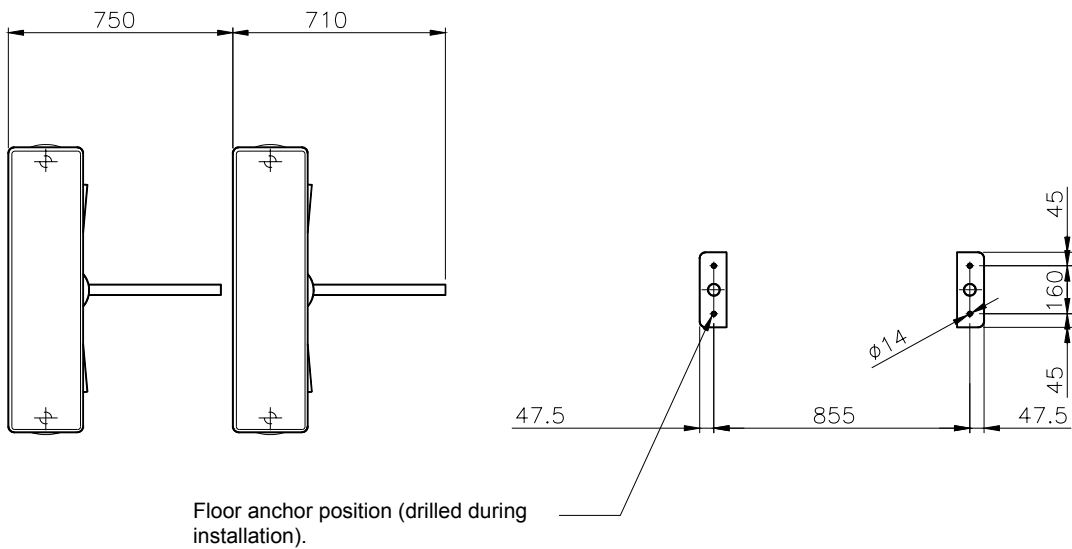
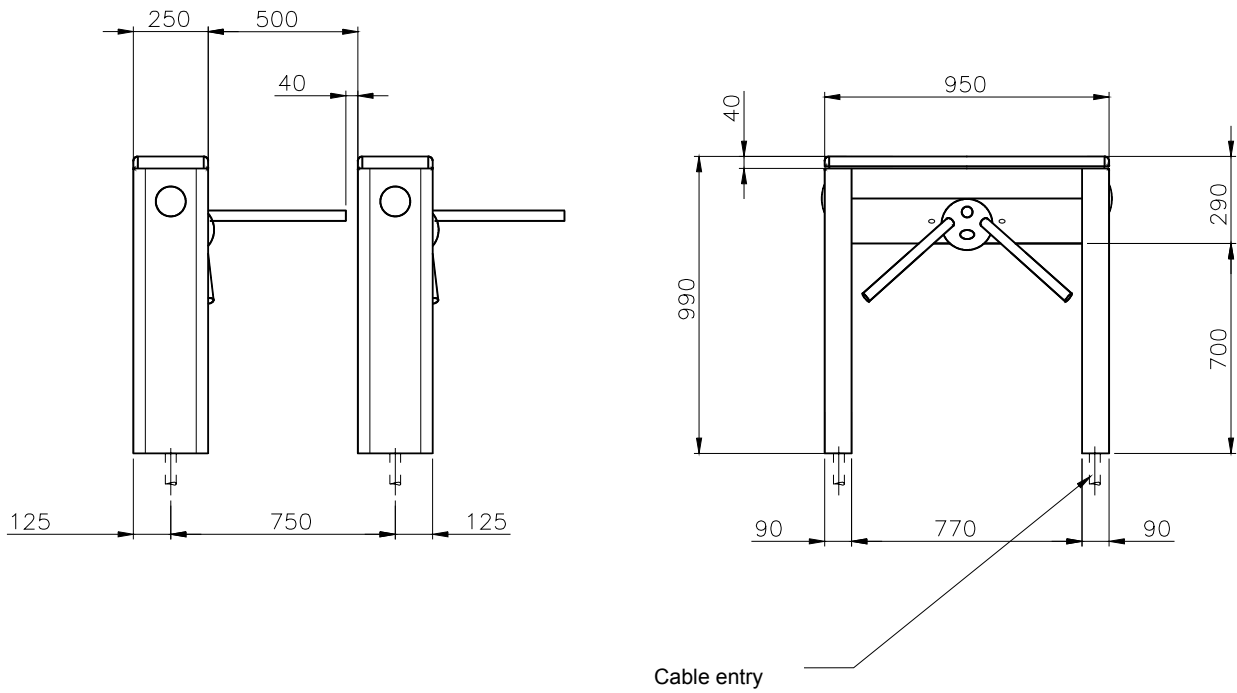
Fail- safe Configuration

- The turnstile can be configured in the Factory in order to allow free passage in case of power failure.

Installation examples



Site preparation Simplex



Concrete to UNI 9858, tipo RCK250.
Base to be flat and level to +/-5mm over footprint area

IMPORTANT

- Any horizontal pipe or conduit runs below the Simplex must be at least 140mm below.
- The dimension reported on this Product Data Sheet are for information only. In order to prepare the Installation Site, please refer to the lay-out drawings prepared by Gunnebo Entrance Control or ask for confirmation.

Flow Rates

Reader Device	Number per minute
Insertion type	20
Insertion type with PIN code keypad	10
Swipe type	30
Swipe type with PIN code keypad	12
Proximity 'Hands Free'	40

- Please note the figures are approximate and must be confirmed with Gunnebo Entrance Control Ltd.
- Figures quoted are for one person per complete passage per walkway and per minute.
- It is assumed the access control authorisation response is instantaneous.

For sales enquiries please contact:



Competence Centre Entrance Control

Gunnebo Entrance Control Ltd. Bellbrook Business Park, Uckfield, East Sussex, TN22 1QQ, UK.
Tel +44 (0) 1825 761022 Fax +44 (0) 1825 763835
E-mail info.entrancecontrol@gunnebo.com
Web www.gunnebo.com



A COMPANY WITHIN THE GUNNEBO GROUP

HEAD OFFICE SWEDEN
Gunnebo AB, Box 5181, SE-402 26 Goteborg, SWEDEN. Tel +46-31 83 68 00, Fax +46-31 83 68 10

www.gunnebo.com

Note: In pursuit of its policy of continuous refinement and improvement, Gunnebo Entrance Control Ltd reserves the right to modify design and details.